

# starmix

## WORKS - LINE

The new starmix WORKS-LINE brings concentrated vacuuming know-how now also for the price-sensitive entry-level range





Our price-value hit - starmix Works-Line is produced in Electrostar factory in Shanghai under highest quality standards. The series includes a range of products that are simpler and therefore cheaper, but still high quality machines, and are ideally suited for the DIY sector.

Works-Line units stand for

- ✓ Outstanding price-performance ratio
- ✓ 2-year warranty
- ✓ Accessories included in the scope of delivery
- ✓ Proven performance data in suction power and filter cleaning



ENERGETIC from p. 4



FLEXO from p. 6



ASH VACUUM CLEANER from p. 8



CLEANING MOUSE p. 10

**Energetic range**

# Strong. Versatile. Safe. Low-priced.

The Energetic vacuum cleaners of the new Works-Line offer a multitude of professional functional features with top suction power and that at an unbeatable price.

The new specialist for the craftsman is available in dust classes M and H and is thus a strong partner for all work on the construction site and in the workshop.



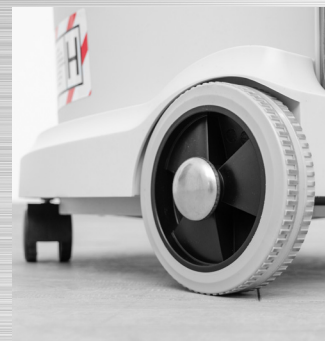
**Energetic APDM-1430**  
For wet and dry vacuuming,  
with filter cleaning, 30l container



**Energetic APDH-1430**  
For wet and dry vacuuming,  
with filter cleaning, 30l container

✓ The only vacuum cleaner with **semi automatic filter cleaning** in this price segment, ensures **constantly high air flow** after filter cleaning and thus **higher productivity**.

✓ The **airflow measurement** monitors the real airflow with **high precision** and warns the customer if it falls below the specified minimum value.



**„Good on foot“**

Extremely robust wheels with rubber coating and a metal axle provide the necessary robustness.



**Convenient emptying**

Thanks to a simple-to-use drain plug, liquids can be emptied easily.



**All stowed away**

All the accessories supplied can be neatly stowed via the slots, as well as the hose by means of two hose hooks that can be hooked onto the side of the device.



**Clear operating panel**

- Appliance socket for switching the vacuum cleaner ON/OFF via power tools
- Volume flow monitoring: visual and acoustic warning signal
- Filter bag level indicator
- Stepless speed regulator
- Preselection switch hose diameter
- ON/OFF/AUTO switch

Artikel-Nr.	110042	110066
<b>Scope of delivery</b>		
<b>Accessories</b>	<b>*see accessories</b>	<b>*see accessories</b>
Filter bag	yes, 1 pc FBV 30, fleece filter bag Repurchase in 5-pack art. no. 460772	yes, 1 pc FBVPE 30, fleece filter bag in PET bag Repurchase in 5-pack art. no. 460482
<b>Equipment</b>		
Main filter	FPP 3500, WS Dust retention: 99,9 % Art. no.: 460727	FPP 5000 HEPA, WS Dust retention 99,995 % Art. no.: 460475
Filter cleaning	Semi-automatic, PressClean	Semi-automatic, PressClean
Appliance socket	yes	yes
Speed control	yes, stepless	yes, stepless
Hose winding	yes	yes
Blowing function	no	no
Drain function	yes	yes
Parking position	yes	yes
Rubberised wheels	yes	yes
Stand-by-LED	yes	yes
Water level detection	yes	yes
Accessories storage (slots)	yes	yes
<b>Technical data</b>		
Power consumption (max.)	Watt 1400	1400
Volume flow (max.)	l/s 70	70
Vacuum (max.)	mbar 220	220
Container volume (max.) - Gross-Dust- Water	l 30 - plastic	30 - plastic
Sound pressure level	dB(A) 76	76
Dimensions	L x W x H 39,5 x 38 x 61,5 cm	39,5 x 38 x 61,5 cm
Weight	kg 12,5	12,5
Power cable length	m 5 (black)	5 (black)
Maximum reach	m 9	9

**ACCESSORIES\***

**Energetic APDM-1430**

- 1 x Hose AS 35-350, WS (46099)
- 1 x Handle 35 with supplementary air slide, WS (460505)
- 2 x Suction tube steel chrome 35-50, WS (460512)
- 1 x Floor nozzle 35, WS with rubber and brush strips (460529)
- 1 x Crevice nozzle, WS (460710)
- 1 x Tool sleeve WS (460567)
- 1 x Foamfilter, WS (460543)
- 1 x Suction tube holder Energetic, WS (460536)
- 2 x Hose hook Energetic, WS (460550)



**Energetic APDH-1430**

- 1 x Hose AS 35-350, WS (46099)
- 1 x Handle 35 with supplementary air slide, WS (460505)
- 2 x Suction tube steel chrome 35-50, WS (460512)
- 1 x Floor nozzle 35, WS with rubber and brush strips (460529)
- 1 x Crevice nozzle, WS (460710)
- 1 x Tool sleeve WS (460567)
- 1 x Foamfilter, WS (460543)
- 1 x Suction tube holder Energetic, WS (460536)
- 2 x Hose hook Energetic, WS (460550)



Flexo range

# Flexo - a benefit for everyone

The all-rounder for the beginner's range and wallet.

As a specialist in the DIY sector, the Flexo vacuums are ideal for small craft work, as well as applications around the house, workshop, garage, garden and car. Versatile and reliable in the result.



**Flexo P-1420**  
For wet and dry vacuuming,  
with filter cleaning, 20l container



**Flexo AP-1420**  
For wet and dry vacuuming,  
with filter cleaning, 20l container



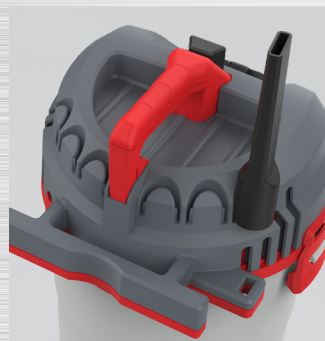
### Blowing function

By changing the suction hose from the grey to the red socket, the suction function becomes a powerful blowing function.



### Filter cleaning

The filters are cleaned by using the function PressClean - hold the hose closed and press the switch several times (min. 3x).



### Neat and tidy

All of the included accessories can be neatly stowed away via the slots, as well as the cable by means of an integrated cable hook.



### Control panel

The clearly arranged control panel houses the ON/OFF switch and a power socket with automatic switch-on for power tools (Flexo AP-1420 only).

Article no.	110103	110110
<b>Scope of delivery</b>		
<b>Accessories</b>	<b>*see accessories</b>	<b>*see accessories</b>
Filter bag	yes, 1 pc FBV 20, fleece filter bag Repurchase in 5-pack art. no. 462578	yes, 1 pc FBV 20, fleece filter bag Repurchase in 5-pack art. no. 462578
<b>Equipment</b>		
Main filter	FPP 750, WS Art. no.: 462561	FPP 750, WS Art. no.: 462561
Filter cleaning	Semi-automatic, PressClean	Semi-automatic, PressClean
Appliance socket	no	yes
Speed control	no	no
Hose winding	no	no
Blowing function	ja	yes
Drain function	no	no
Parking position	yes	yes
After running	no	yes
Water level detection	yes	yes
Antistatically prepared	no	no
Accessories storage (slots)	yes	yes
<b>Technical data</b>		
Power consumption (max.)	Watt	1400
Volume flow (max.)	l/s	30
Vacuum (max.)	mbar	216
Container volume (max.) - Gross-Dust- Water	l	20 - plastic
Sound pressure level	dB(A)	76
Dimensions	L x W x H	32,9 x 36,1 x 53 cm
Weight	kg	5
Power cable length	m	5
Maximum reach	m	8

### ACCESSORIES\*

#### Flexo P-1420

- 1 x Hose Ø 32, 3 m
- 1 x Floor nozzle
- 1 x Handle, with supplementary air slide, WS (460505)
- 2 x Suction tube, plastic
- 1 x Crevice nozzle, WS (460710)
- 1 x Inflation kit
- 1 x Foam filter

After-sale alternative:  
Floor nozzle 35, WS 460529  
Suction tube St Cr 35-50, WS 460512



#### Flexo AP-1420

- 1 x Hose Ø 32, 4 m
- 1 x Floor nozzle
- 1 x Handle, with supplementary air slide, WS (460505)
- 2 x Suction tube, plastic
- 1 x Crevice nozzle, WS (460710)
- 1 x Inflation kit
- 1 x Foam filter
- 1 x Tool sleeve

After-sale alternative:  
Floor nozzle 35, WS 460529



AV range

# Ashes to ashes - a clean business

Grill, fireplace or stove - as much as we like to use them, we hate to clean them. Removing the ashes can be quite a messy business. All the better if a small, compact vacuum cleaner is available to quickly remove the ashes - with the AV series, this is even possible at a low price.



**AV P-615**  
For dry vacuuming with filter cleaning, 15l container



**AV P-15 18V**  
For dry vacuuming, with filter cleaning, 15l container



**Easy to use**

Large foot switch for ON/OFF. Manual filter cleaning - **PressClean**. Simply hold the hose closed and press the switch.



**Two-stage filter system**

To protect the main filter, a washable pre-filter is placed over the cellulose main filter.

**Working with different brands? All with just one CAS battery pack.**

**CAS. The multi-brand battery system.** More than 40 powerful manufacturers have joined forces so that tools, battery packs, and chargers are 100% compatible with each other. CAS battery packs are developed in Germany and perform well even in the most demanding applications thanks to leading battery pack technology.

[cordless-alliance-system.de](http://cordless-alliance-system.de)

Article no.	100159	110011
<b>Scope of delivery</b>		
<b>Accessories</b>	<b>*see accessories</b>	<b>*see accessories</b>
Filter bag	yes, 1 pc FBPP 15, PP disposal bag Repurchase in 5-pack art. no. 462073	yes, 1 pc FBPP 15, PP disposal bag Repurchase in 5-pack art. no. 462073
<b>Equipment</b>		
Main filter	FF 3000, WS, flat-fold filter cellulose Art. no. 459608	FF 3000, WS, flat-fold filter cellulose Art. no. 459608
Filter cleaning	Semi-automatic, PressClean	Semi-automatic, PressClean
Appliance socket	no	no
Speed control	no	no
Hose winding	yes	yes
Blowing function	no	no
After running	no	no
Water level detection	no	no
Antistatically prepared	no	no
Accessories storage (slots)	yes	yes
<b>Technical data</b>		
Voltage	Volt 220-240V/50-60Hz	18
Running time with 1 x 18V 5.2 Ah / 2.0 Ah battery	Min. -	21 approx. / 8 approx.
Power consumption (max.)	Watt 600	350
Volume flow (max.)	l/s 23	20
Vacuum (max.)	mbar 160	120
Container volume (max.) - Gross-Dust- Water	l 15 - steel	15 - steel
Sound pressure level	dB(A) n.a.	70,5
Dimensions	L x W x H 31,2 x 35 x 38,5 cm	31,2 x 35 x 38,5 cm
Weight	kg 2,8	2,8
Power cable length	m 4	-
Maximum reach	m 5,3	∞

**ACCESSORIES\***

**AV P-615**

- 1 x Aluminium reinforced suction hose 1.3 m
- 1 x Aluminium scraper nozzle
- 1 x Pre-filter FSP 630, WS (462080)



**AV P-15 18V**

- 1 x Aluminium reinforced suction hose 1.3 m
- 1 x Aluminium scraper nozzle
- 1 x Pre-filter FSP 630, WS (462080)



**Battery and charger not included!**

**Battery recommendation:**  
Battery pack 18V Li-Power 2.0 Ah  
Running time: 8 min. approx.  
Article no. 461205

**Charger recommendation:**  
Battery charger SC 30  
Charging time for Li-Power 18V 2.0 Ah: 30 min.  
Article no. 462219

Specials range

# Cleaning mouse - Anti-crumbs

Small but mighty, and a practical helper in every household, office, canteen, .... everywhere where it „crumbs“.



**Cleaning mouse**  
For dry cleaning on smooth surfaces



Article no.	107707	
Equipment	Meshfilter	
Main filter	Meshfilter	
Technical data		
Power consumption (max.)	Watt	3
Voltage (max.)	Volt	3,2
Volume flow (max.)	l/s	3,9
Vacuum (max.)	mbar	3
Dimensions	L x W x H	10,5 x 8,5 x 6,8 cm
Weight	kg	0,16

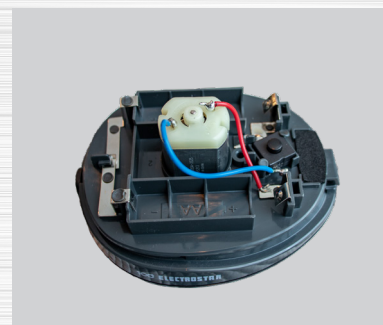
**Easy to use**

The cleaning mouse has an ON/OFF switch on the top. The push button on the back is used for emptying.



**Filter**

A mesh filter keeps the coarsest dirt away from the engine.



**Battery compartment**

The battery compartment is easily accessible. The cleaning mouse is ready to use with 2 x AA batteries (not included).



**Versatile use**



**WORKS - LINE**

**VERSATILE AND AFFORDABLE**